

GOMDE UK

*The Peatland Retreat Wing*



## INTRODUCTION

Gomde UK, Lindholme Hall is delighted to share our plan for the new Peatland Retreat Wing with you.

The Peatland Retreat Wing will be the next exciting part of Chökyi Nyima Rinpoche's vision: to create a monastery providing a stable and lasting home for Buddhist teachings in the UK. Thubten Chökor Ling Monastery at Lindholme Hall, Doncaster will be supported by a range of facilities to enable teaching, study, practice and retreat for everyone.

Founded in 2009, Gomde UK has hosted dozens of visits and retreats with masters of the tradition, including Chökyi Nyima Rinpoche, Chokling Rinpoche, Phakchok Rinpoche, Kyabje Khen Rinpoche, Tsangsar Rinpoche, Drubpon Lama Tenzin Sangpo, Lama Tsultrim Sangpo, Lama Oser, Khenpo Pema Nyamgal, Khenpo Tokpa Tulku, Erik Pema Kunsang, Lama Bruce Newman, Erric Solomon and David Shlim. It is only because of your incredible support that all this has been possible — *thank you*.





IMAGE (LEFT): *Lama Öser, Resident Lama at Gomde UK*  
IMAGE (RIGHT): *Khenpo Pema Nyamgal, visiting teacher,  
from Ka Nying Shedrub Ling Monastery*







IMAGE: *Illustration of the new Peatland Retreat Wing at Gomde UK*





## RETREAT AT GOMDE UK

The new Peatland Retreat Wing will ensure that these precious teachings can continue to be offered to an ever-growing Sangha.

This new wing will consist of ten purpose built studio rooms. Each room will be specially adapted to facilitate your retreat, study and practice in an accessible way, while making the most of the vast beauty of the estate and the surrounding peatlands, a vitally important natural ecosystem.

We warmly invite you to become a part of building a lasting home for Buddhism in the UK — for yourselves and for generations to come.

IMAGE: *A room with a view — the new Peatland Retreat Wing (illustration)*





*IMAGE: Gomde UK Lindholme Hall is a beautiful, secluded 180-acre estate located in the centre of the Humberhead Peatlands National Nature Reserve*



## THE JOURNEY SO FAR

Gomde UK Lindholme Hall is a beautiful, secluded 180-acre estate located in the centre of the Humberhead Peatlands National Nature Reserve.

Since its founding 14 years ago, Gomde UK has already flourished and grown beyond all our expectations. Thanks to the effort, expertise and generosity of all our supporters and volunteers, together we have created a sustainable base and community dedicated to Buddhist study, retreat and practice in the UK.

IMAGE: *Kyabjé Khen Rinpoche takes a stroll at Gomde UK*







◆

*How will the Peatland  
Retreat Wing make  
a difference?*

IMAGE: View of Lindholme Hall in 2022, highlighting the location of the new Peatland Retreat Wing

◆



We want to make sure that Gomde UK continues to offer these transformative and rare teachings for the benefit of all — but we can only do that if we are able to provide the facilities that make remarkable retreats like these possible.

The new Peatland Retreat Wing provides a precious opportunity to further serve our Sangha's expanding need, all while our environmental work positively impacts the conservation of the idyllic natural environment of South Yorkshire.



IMAGE: *Chökyi Nyima Rinpoche entering the meditation hall for our Annual Retreat*





◆  
As a registered Buddhist charity, we have two, mutually supportive, charitable objectives:

### THE DHARMA

To provide an enduring base where the Buddha's teachings can be preserved and taught, studied and practised for the benefit of all beings.

### THE ENVIRONMENT

To protect, preserve and nurture the rare habitat of the Lindholme estate, support the regeneration of the wider peatlands and proactively contribute to alleviate our present-day environmental challenges.

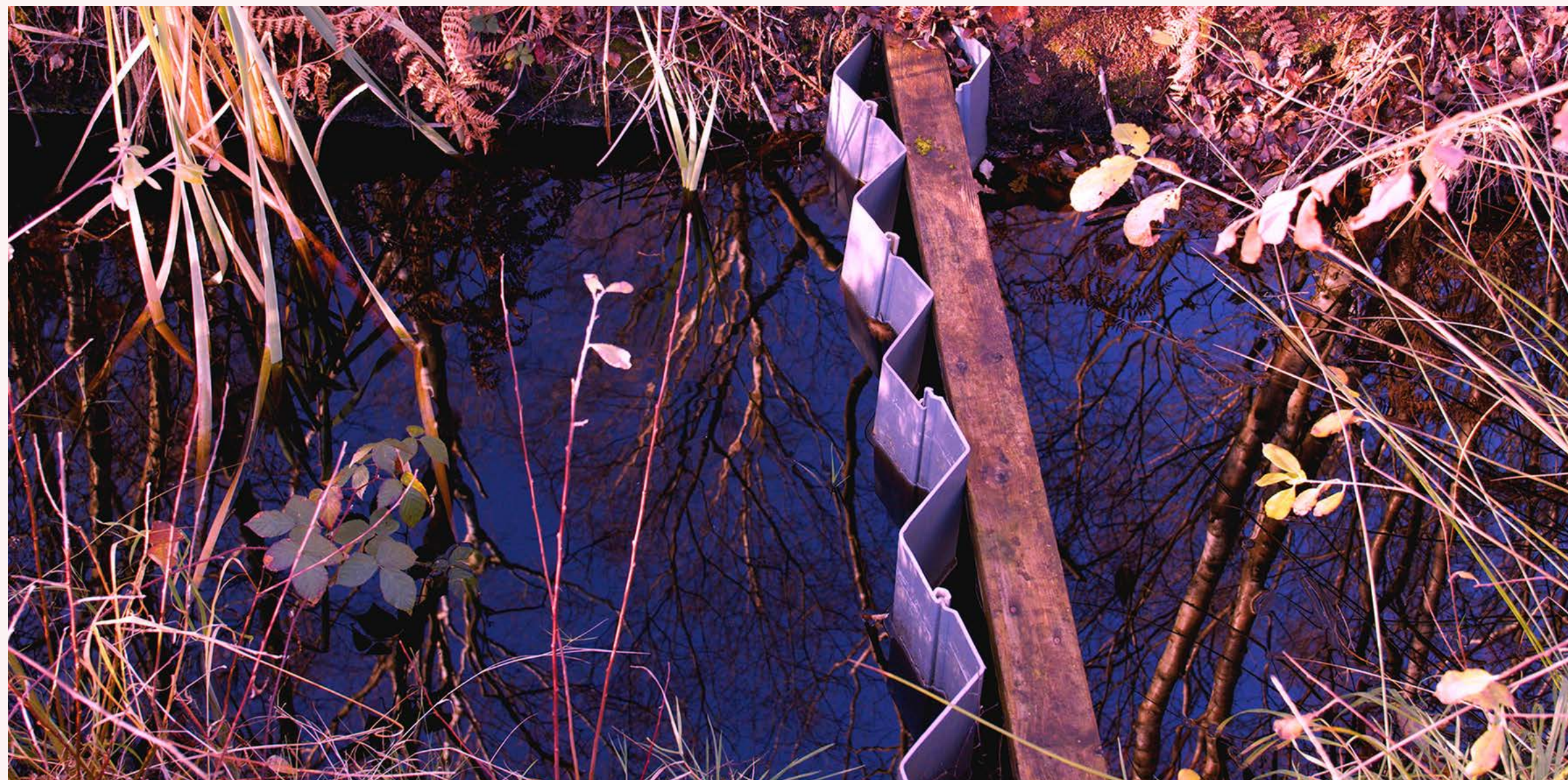


IMAGE (TOP): *Chökyi Nyima Rinpoche attends to the finer aspects of the shrine offering*  
IMAGE (BOTTOM): *Keeping water 'uphill' on the Lindholme Old Moor, still from the film Full Circle (2022)*





The new Peatland Retreat Wing represents an extraordinary opportunity to meet both of these objectives. Not only will its creation further establish Gomde UK as a base for authentic Buddhist practice in the UK, we will also ensure it will positively impact upon the rare habitat of the Lindholme estate, the surrounding National Nature Reserve and be part of a global response to counteract the impacts of climate change.

IMAGE: *Sphagnum* moss—the building block of peatland regeneration,  
Still from the film Full Circle (2022)





*“This place is a jewel; it is not possible  
to find a place superior to this.”*

CHÖKYI NYIMA RINPOCHE • SPIRITUAL DIRECTOR, GOMDE UK



## A TRUE PLACE OF REFUGE

Buddhism allows us to develop the profound qualities of our mind for the benefit of others. Retreat provides undistracted time for reflection, meditation and study, which enables us to realise the true intent of the Buddha's teaching.

Yet, for so many of us, finding the time and the place in our busy lives is extremely hard to find.

The new Peatland Retreat Wing is a response to the growing need of the community for a beautiful, equipped and dedicated location for retreat. Our goal is to offer that comfortable and protected space, thoughtfully designed and tailored to the needs of practice in the modern world.

IMAGE: *Lama Öser making an offering at Gomde UK*







◆  
To achieve all this, while not sacrificing the secluded conditions necessary for retreat, will be a rare and precious thing indeed — but now possible, all thanks to your kind support.

Each room will share a panoramic view of the island and will be purpose-built under the blessing of Chökyi Nyima Rinpoche. Your generosity will allow Gomde UK to provide a lasting benefit for hundreds of retreatants, including yourself, for years to come.

IMAGE: *Preparing an image of the dharma wheel with Lama Tenzin for Chökyi Nyima Rinpoche's arrival*



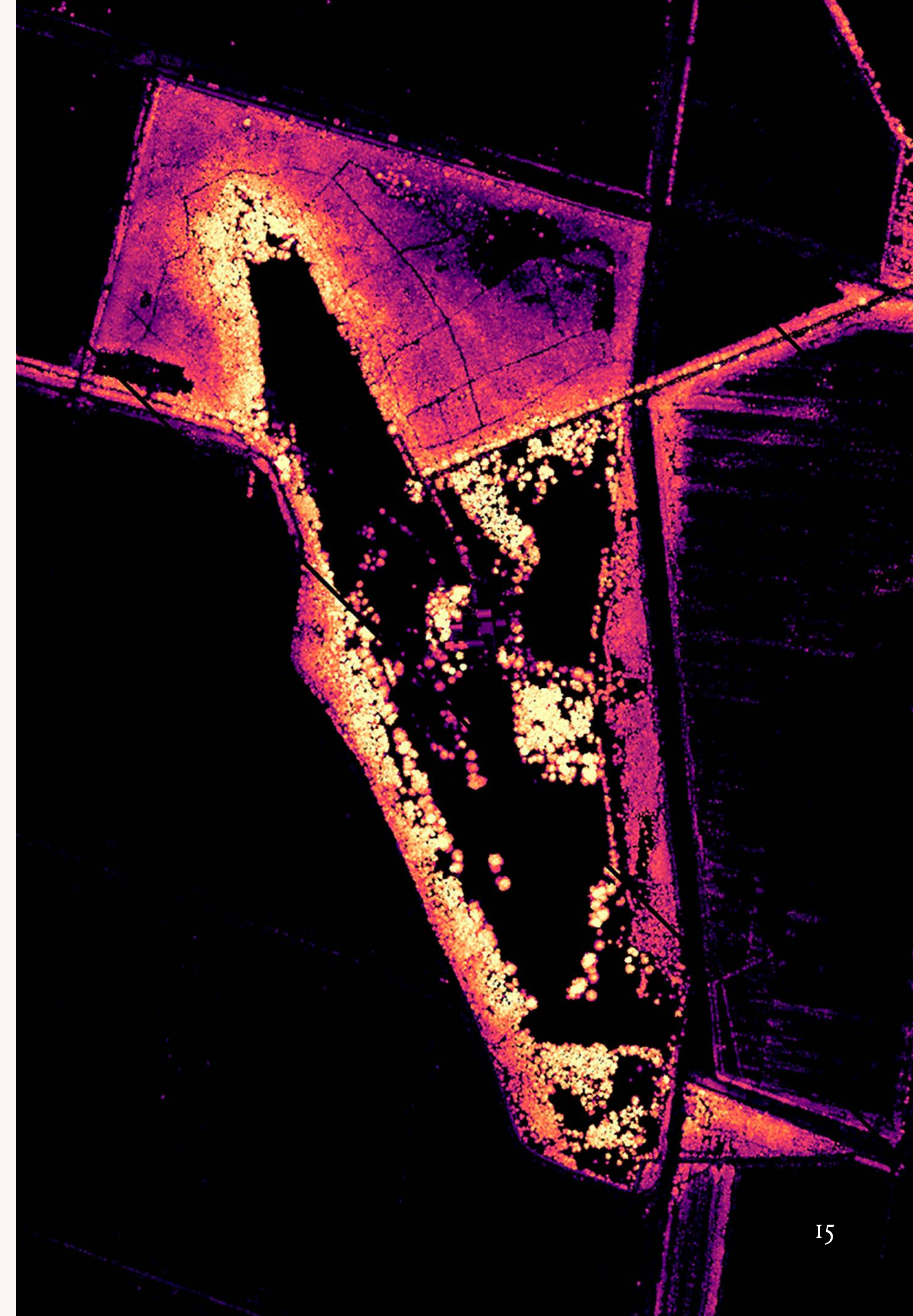
## A SANCTUARY FOR ENVIRONMENTAL RESEARCH AND EDUCATION

The shared values of Buddhism and environmentalism, such as cause and effect, impermanence, interdependence and a long view, sit at the heart of Gomde's environmental work.

The peatland habitat, found on both the estate and the surrounding nature reserve, is as precious—and filled with life—as any patch of the Amazon rainforest. It is also in desperate need of protection and restoration.

Our environmental group, the Lindholme Old Moor Management Team, is at the cutting edge of climate change intervention. Their work, focused on recovering and restoring the rare carbon-capturing habitat of our peatlands, reduces the impact of CO<sub>2</sub> in the atmosphere, while also ensuring that the natural habitat remains protected.

IMAGE: *LiDAR image of Lindholme Island showing vegetation height*







◆  
Most recently, we embarked on an exciting new venture to create a ‘mossery’ propagating sphagnum moss, a major building block of peatland regeneration.

At such a crucial time globally, we have an incredible opportunity for research and direct action right on our doorstep. The new Peatland Retreat Wing will provide much needed additional accommodation supporting conferences, field work and research for researchers and educators.

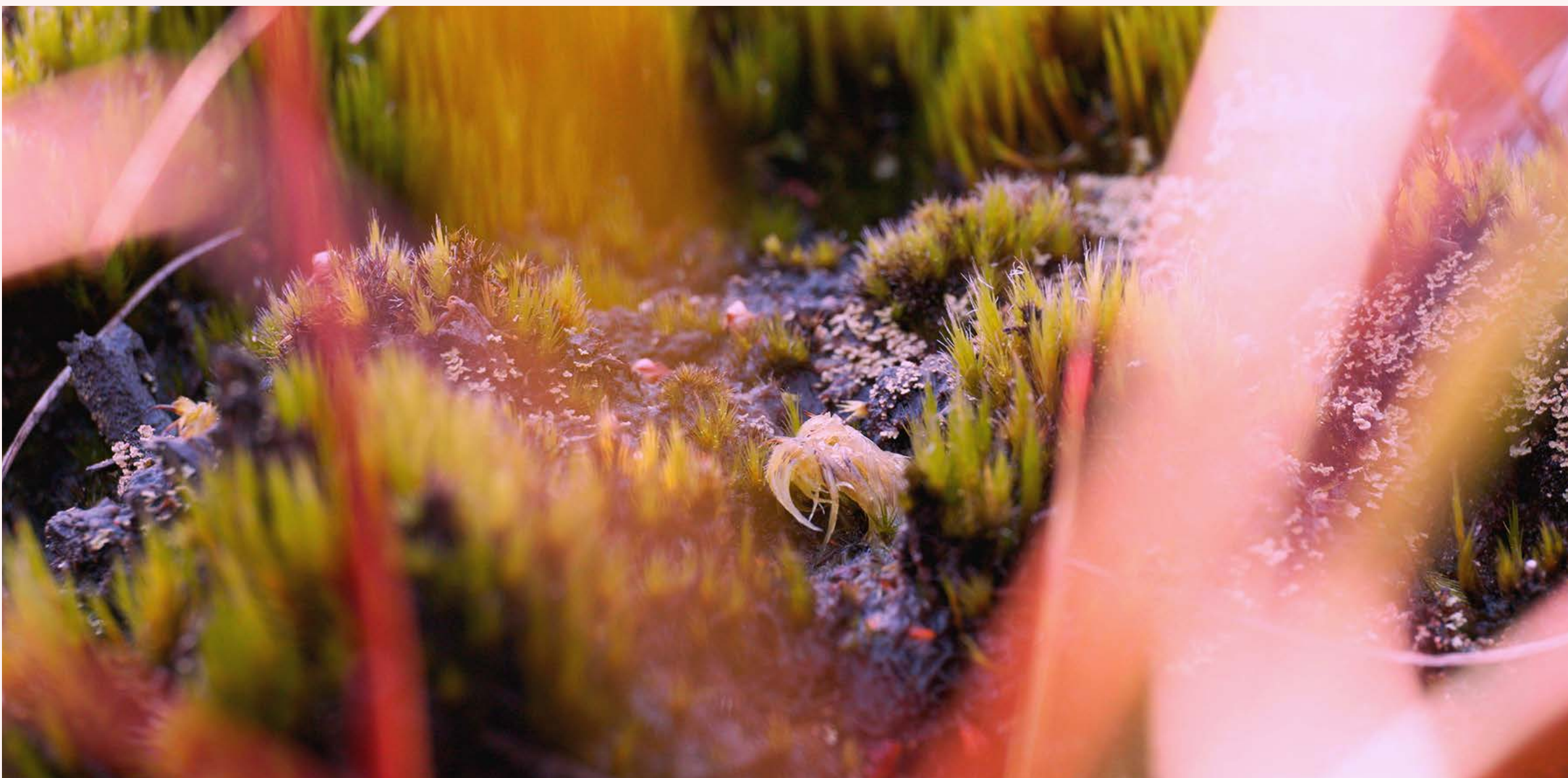


IMAGE (TOP): *Making a mossery — to regenerate the precious peatlands*  
IMAGE (BOTTOM): *Botanical detail Lindholme Old Moor, still from the film Full Circle (2022)*





IMAGE: Chökyi Nyima Rinpoche kindly 'sharing his view'

◆

*The Peatland Retreat  
Wing: Share My View*

◆



Our spiritual director, Chökyi Nyima Rinpoche has asked us to ensure that each room shares his favourite view of the estate — the south vista. This beautiful, natural landscape supports our mind to not only be at ease, but change for the better.

The new glass-fronted retreat wing will have ten ensuite studio rooms, each with far reaching views of the land. The designs incorporate a kitchenette, sleeping, practice and study area. Most of the rooms will have sunrooms and some will guarantee wheelchair accessibility and adaptability.







IMAGE: *Illustration of the new Peatland Retreat Wing at Gomde UK*



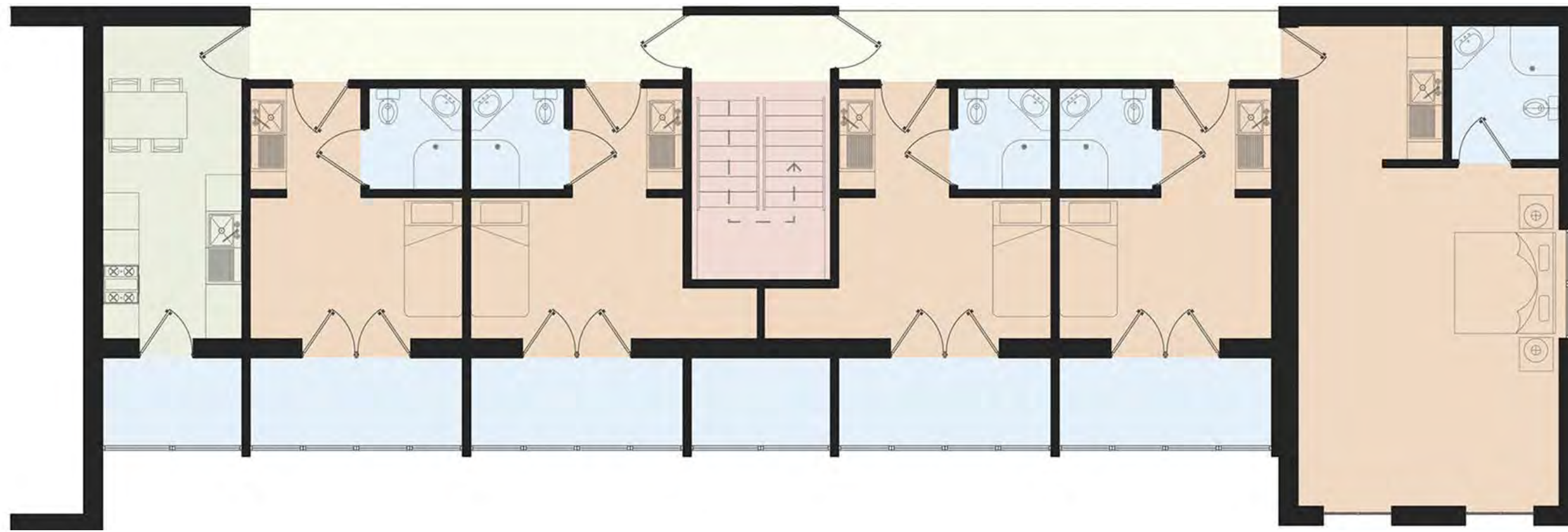


◆

The construction will be brick-clad on a timber frame, allowing space for a high level of insulation for the colder Autumn and Winter months. Our commitment to net zero carbon emission, achieved in September 2023, means that all our buildings harvest renewable energy to heat and cool themselves. The wing's heat pumps will be powered by photovoltaic panels, harnessing the sustainable power of the sun.

IMAGE: *Gomde UK has already installed two large arrays of solar voltaic panels on the meditation hall and the studio*





FIRST FLOOR



GROUND FLOOR

*The Peatland Retreat  
Wing: floor plans*



## HOW CAN I HELP?

With Rinpoche's blessings, Gomde UK is made possible only through kindness and generosity of all of you: its supporters and Sangha. Thank you to everyone who has been a part of the journey so far!

We know you want Gomde UK to thrive, providing a place dedicated to authentic practice, away from the many distractions and complications of the world. We also know you share our commitment to create a base that directly supports clear, achievable environmental action.

In 2023, Chökyi Nyima Rinpoche made an extraordinary gift of £10,000 to launch this project. Now, we need your support.

We need to raise £400,000 to create the Peatland Retreat Wing so that we can continue to make teachings available to everyone who wants to receive them — making Gomde UK a true 'pureland' for authentic practice, right here in England.

Get involved today and be a part of Chökyi Nyima Rinpoche's vast and profound vision — *thank you*.



## HOW MUCH WILL IT COST?

### CONSTRUCTION

Exterior frame	£233,450
----------------	----------

Interior	£126,500
----------	----------

Demolition and excavation	£9,500
---------------------------	--------

Design and planning	£1,600
---------------------	--------

Total construction cost	£371,050
-------------------------	----------

### OTHER

Furniture, fittings and equipment	£20,000
-----------------------------------	---------

Administration and campaign	£8,950
-----------------------------	--------

Total other cost	£28,950
------------------	---------

<b>TOTAL PROJECT COST</b>	<b>£400,000</b>
---------------------------	-----------------

## HOW TO DONATE

Making a one-off donation

*(click button to make a donation)*

**DONATE** ↗

Create a regular pledge and give monthly, quarterly or annually

*(click button to make a donation)*

**DONATE** ↗

Or get in touch with us directly to make a donation: *info@gomde.uk*

You can also make a donation via our website: *gomde.uk/donate*



*“Share my view.”*



IMAGE: Chökyi Nyima Rinpoche at the Gomde UK Annual Retreat

**CHÖKYI NYIMA RINPOCHE • SPIRITUAL DIRECTOR, GOMDE UK**



## ACKNOWLEDGEMENTS

### IMAGES:

Photos by Brit Temby • page 1 (COVER), 3 (RIGHT),  
6, 7, 9, 10 (TOP), 13, 14, 25

Photos by Chris Zvitkovits • page 3 (LEFT), 24

Stills by Yu-Chen Wang • page 10 (BOTTOM), 11, 12,  
16 (BOTTOM)

LiDAR image by Tim Prosser (Lindholme Old Moor  
Management Group) • page 15

Photos by Paulette Benjamin • page 16 (TOP), 18, 20

Photo by Mikk Tamm • page 17

A number of images in this brochure are stills from the artwork *Full Circle* (2022) by Yu-Chen Wang, which explores Doncaster's industrial heritage, where nature and technology collide. Yu-Chen Wang worked closely with Gomde UK and Michael Oliver of the Lindholme Old Moor Management Group, filming in the Lindholme Old Moor (Gomde UK), Hatfield Moors and the Humberhead Peatlands National Nature Reserve.

Design by Des Lloyd Behari

Published November 2023

IMAGE: *The Buddha on Gomde UK shrine*





FOLLOW US ON:  
INSTAGRAM ♦ FACEBOOK  
*(click on words to follow)*

*Buddhism is a way of life through which we develop the profound qualities of our mind with the express intention of impartially benefiting everyone.*

WEB: [gomde.uk](http://gomde.uk) ♦ EMAIL: [info@gomde.uk](mailto:info@gomde.uk) ♦ TELEPHONE: +44 (0)1302 842 503

Gomde UK, Lindholme Hall  
Lindholme Bank Road  
Hatfield Woodhouse  
Doncaster  
DN7 6DT

REGISTERED CHARITY N<sup>o</sup>: 1132050

